

# BATTERY POST ABUSE SAMPLES

"First Battery only warrants that this Battery is free of defects in material and workmanship under normal use and service conditions and in terms of correct application." Thus using batteries for any other purpose than the correct application will void the warranty. Battery casing and Posts can give a good indication as to the use and abuse of the battery.



## EXAMPLES OF 2 YEAR OLD BATTERY POSTS USED ONLY FOR AUTOMOTIVE STARTING PURPOSES



Post bend due to excessive force applied on post. This deformation may cause internal defects that can limit battery life



Hole drilled in post. This indicates that the battery was not only used for Automotive starting purposes and thus voids the conditions for warranty



Led melted away due to sudden excessive current on top of post (Arc marks). This may cause high internal current that may reduce the lifetime of the battery



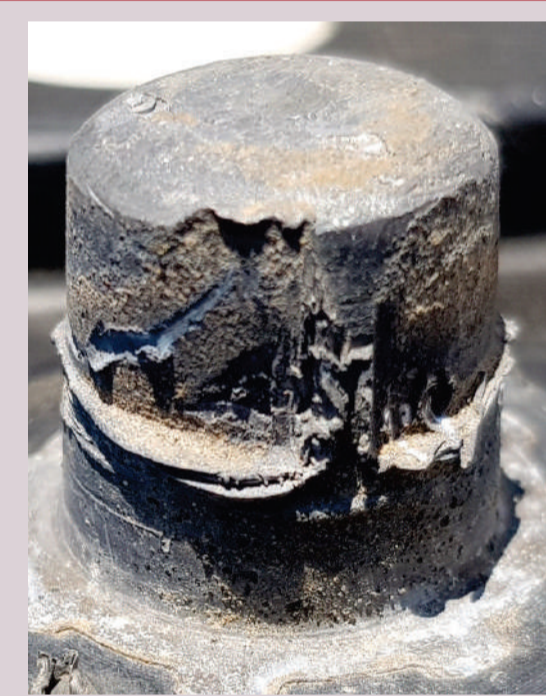
Lead re melted on top of post. This indicates rework done to the post that can cover a range of abuse



Excessive forces. It is visible from the battery casing that there has been excessive down force on the post that can damage the battery internally and reduce the lifespan of the battery



Reworked Post. The sharp edges and file/ sanding marks on the top and sides of the post indicate that the post was reworked and tampered with this voids the warranty



Battery terminal forced over post. These marks indicate that the battery terminal was smaller than the post and placed on the post with excessive down force creating the peeled lead marks and can cause internal damage that can reduce the battery lifetime



Indentations on the top of the post. This indicate "hammering" marks on the top of the post that can cause internal damage to the battery and reduce the lifespan of the battery



Re moulded post. This indicates that the post was tampered with and thus voids any warranty



Marks on post. The marks are a clear indication that the battery was not only used for automotive starting purposes and thus voids any warranty



Reworked top of post. This indicate the hiding of abuse on the post and any rework marks will void the warranty



Post abuse marks. These marks indicate that the battery was not only used for automotive starting purposes as automotive battery terminals do not cause these marks under normal vehicle use



Marks on post. The marks are a clear indication that the battery was not only used for automotive starting purposes and thus voids any warranty



Reworked top of post. This indicate the hiding of abuse on the post and any rework marks will void the warranty



Post abuse marks. These marks indicate that the battery was not only used for automotive starting purposes as automotive battery terminals do not cause these marks under normal vehicle use

## MARKS INDICATING THAT THE BATTERY WAS NOT ONLY USED FOR AUTOMOTIVE STARTING PURPOSES



[www.battery.co.za](http://www.battery.co.za)  
TOLL FREE 0800 112 600

